

Cybersecurity Application Controls

Pathlock's Cybersecurity Application Controls (CAC) automates key cybersecurity processes to safeguard business-critical SAP applications and sensitive data. By integrating preventative and detective security controls, you can achieve real-time security visibility, proactive system hardening, and dynamic risk prevention.

Automate Your Cybersecurity, Data Security, and Compliance Processes for SAP

Organizations face many challenges in effectively managing cybersecurity for their SAP environments and mitigating risk to their sensitive data from internal and external threats. To address these varying challenges effectively, they need optimized security controls in place to secure both their SAP systems and sensitive data. Thankfully, Cybersecurity Application Controls from Pathlock integrates preventative and detective security controls to do just that.

The CAC product from Pathlock offers automated Vulnerability Management, Threat Detection and Response, Code Scanning, and Transport Control modules for proactive system hardening and continuous security monitoring. The product also offers the Dynamic Access Controls (DAC) module built on an Attribute-Based Access Control (ABAC) model for dynamic risk prevention and robust data governance and security. With this revolutionary cybersecurity product, businesses can establish unparalleled, comprehensive security for their SAP environments, prevent system infiltration and data exfiltration, and automate compliance with numerous regulatory and data privacy frameworks.

A Complete SAP Cybersecurity Application Controls Suite



Dynamic Access Controls

Dynamically control and secure access to SAP data based on user attributes and data sensitivity.



Vulnerability Management

Automate vulnerability scanning and prioritize patching for SAP systems and infrastructure.



Threat Detection and Response

Continuously monitor and automatically respond to SAP threats and integrate with any SIEM for centralized security visibility.



Code Scanning

Automatically identify security vulnerabilities and compliance issues within custom SAP ABAP code.



Transport Control

Secure the entire SAP change management process by scanning transports for vulnerabilities at the import and export phases across development, QA, and production systems.

A Complete SAP Cybersecurity Suite



Dynamic Access Controls (DAC)

SECURING YOUR SENSITIVE DATA: GRANULAR DATA GOVERNANCE AND ROBUST RISK PREVENTION

The Dynamic Access Controls module applies a dynamic ABAC security model for SAP applications to mask sensitive data in production systems, scramble replicated test data for security in non-production environments, prevent unauthorized transmission or downloads of sensitive data, and dynamically govern transaction access based on data and user attributes. This enables a customizable, scalable, policy-based data security and access control approach. Whether you need to protect sensitive data in production or non-production systems, reduce redundant and cumbersome role re-design efforts, or streamline compliance with regulatory and data privacy frameworks, this module enables fine-grained data governance and compliance for SAP.

Dynamic Access Controls Benefits

Eliminate Role Explosion and Reduce Manual Effort

The ABAC model eliminates the need for excessive roles to address conditional and complex user authorizations. This enables dynamic role assigning, eliminates the creation of one-off and duplicate roles, and overall streamlines access control across all users in all systems. This significantly reduces ongoing role management efforts for security teams.

Standardization and Scalability of Access Controls

Once ABAC security policies are initially defined, there is little to no required maintenance on a per-role basis. This ensures access controls effectively and securely scale as your business grows.

Streamlined Compliance and Automated Audit Reporting

OOTB workflows and templates enable audit-ready reporting and analysis. Contextual logs and activity logging deliver attestations and demonstrate data privacy and regulatory compliance with frameworks like ITAR, EAR, SOX, GDPR, CCPA, NERC, PCI DSS, FISMA, NIST CSF, the FTC Safeguards Rule, and the SEC Cyber Rule.

“With the various modules, Pathlock Cybersecurity Application Controls provides a powerful set of capabilities for securing SAP environments. The solution is closely integrated with SAP ECC and S/4HANA and is delivered on-premises, using SAP-native interfaces. The solution is well-suited for SAP customers that continue to run their SAP solutions on-premises, as well as for customers with S/4HANA or undergoing S/4HANA migration.”

KuppingerCole

Executive View of Pathlock Cybersecurity
Application Controls Report



Vulnerability Management

PROACTIVE HARDENING FOR YOUR BUSINESS-CRITICAL SAP SYSTEMS

The Vulnerability Management module automates vulnerability scanning and audit campaigns with 4000+ OOTB, customizable checks to continuously monitor SAP systems and configurations for security weaknesses. The module also determines applicable patches for your organization's unique environment and prioritizes the most critical patches accordingly. This automated approach enables organizations to establish proactive security processes, reducing the cost and complexity of identifying, prioritizing, and patching security vulnerabilities.

Vulnerability Management Benefits

Reduce Manual Effort

Automating vulnerability scanning and related processes eliminates manual and redundant testing, alleviating overworked Basis teams. This reduces the potential for human error and overlooked vulnerabilities and enables your organization to transition from reactive to proactive system hardening.

Minimize Costly System Downtime

By comprehensively scanning your systems and prioritizing patches and configuration corrections, the Vulnerability Management module reduces planned and unplanned SAP downtime. Automated analysis of applicable patches and prioritization based on criticality to your systems ensures accurate and optimized prescriptive remediation of vulnerabilities without the need for time-consuming trial and error.

Comprehensive Protection

Manually securing all levels of your SAP applications is infeasible. Pathlock's Vulnerability Management module delivers unparalleled visibility and security across your SAP systems' presentation, application, database, operating system, and network levels. This ensures unapparent vulnerabilities are swiftly identified and patched.



Threat Detection and Response

AUTOMATICALLY DETECT, ANALYZE, AND RESPOND TO COMPLEX THREATS AT SCALE

The Threat Detection and Response module leverages 1500+ OOTB, customizable threat detection signatures, and analyzes 70+ log sources to continuously monitor and automatically detect, alert, and respond to internal and external security threats in real time. Automated alerts and prioritized remediation based on criticality ensure targeted and rapid response.

Threat Detection and Response Benefits

Actionable and Relevant Threat Management

Customizable rulesets allow you to define system-relevant parameters for accurate and continuous threat event monitoring across your unique SAP environment. This ensures optimal identification and remediation of the relevant threats potentially affecting your organization's SAP systems. On average, customers typically reduce their threat detection and remediation timeframes by 80%.

Save Time and Money

An advanced filtering mechanism reduces log noise and amount by up to 60%, ensuring only relevant security incidents for your systems are analyzed. These relevant log entries are extracted and correlated to identify complex threat patterns. This saves you time and money compared to exporting all loglines for manual filtering and analysis.

Centralized Visibility and Easy Reporting

Pathlock's Threat Detection and Response module seamlessly integrates and exports threat events to any SIEM solution for efficient security incident consolidation and analysis across all IT solutions in your tech stack. Coupled with Pathlock's dynamic and customizable dashboard, automated reports easily demonstrate SAP security posture to management and auditors.



Code Scanning

SECURING THE ARCHITECTURE OF YOUR BUSINESS-CRITICAL SAP APPLICATIONS

The Code Scanning module continuously monitors and tests your custom ABAP code to automatically identify security vulnerabilities, backdoors, and compliance issues. Whether code is still in development or already deployed to production, this module automates the manual and time-intensive code scanning process. The module enhances the SAP ABAP Test Cockpit (SAP ATC) with 150+ OOTB, customizable security and compliance checks.

Code Scanning Benefits

Shift Left for Early and Often Security Testing

Pathlock's Code Scanning module enables you to identify code vulnerabilities early in the development lifecycle. This eliminates the chance of introducing vulnerable code to your critical production systems and reduces the risk of exploitation by attackers.

Minimize Costly System Downtime

Since code vulnerabilities are proactively identified across production and non-production environments, these weaknesses can be corrected as they emerge. This significantly reduces costly, unplanned downtime to correct ABAP code errors in production systems.

Native Bolt-On for Your Existing SAP Infrastructure

Pathlock's Code Scanning module is built on an ABAP architecture and is an extensible solution to the SAP ATC. This ensures rapid implementation, ease of use and adoption, and a quicker return on your investment.



Transport Control

COMPREHENSIVELY SECURE YOUR SAP CHANGE MANAGEMENT PROCESSES

The Transport Control module continuously monitors, analyzes, and automatically blocks transports containing critical objects or other security vulnerabilities. The module enhances the SAP Transport Management System (SAP TMS) with 90+ OOTB and customizable checks. By testing for security vulnerabilities not covered by the SAP TMS, the module can significantly improve the change management security posture for your SAP environment.

Transport Control Benefits

Secure S/4HANA Migrations

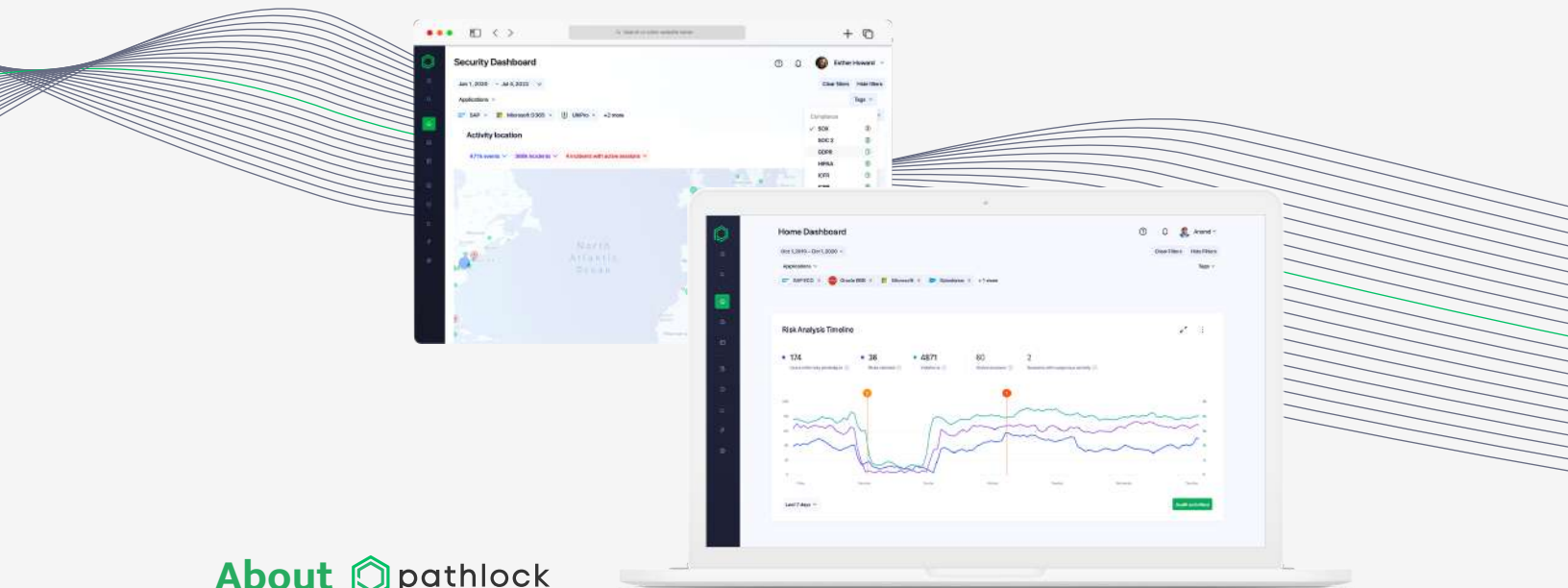
By scanning transports at the import and export phase across production and non-production environments, you can validate proper configurations and data security for transports during your S/4HANA migration journey. This ensures security vulnerabilities are not introduced during your migration.

Save Time and Money

By detecting issues early in the transport lifecycle, the Transport Control module eliminates human error and reduces the cost associated with fixing problems in production systems. Rectifying issues in production environments often requires more resources for firefighting and can disrupt business processes, leading to wasted time, resources, and money.

Eliminates Transport Backlog

Continuous monitoring and testing of SAP transports ensures timely review and remediation of identified vulnerabilities and other critical objects. This ensures quicker deployment of changes to production environments and prevents a growing backlog of transports requiring review, ultimately saving time and increasing efficiency for Basis teams.



About pathlock

The Pathlock Cloud platform provides Continuous Control Monitoring to automate the monitoring of cybersecurity control effectiveness and relevant information gathering in real time. Enterprises can improve their security posture and productivity while reducing audit management expenses. Risk quantification ensures that controls violations can be remediated based on their potential material impact on the enterprise.

For more information, visit www.pathlock.com »
or [get in touch](#) » with us for a demo.

One Tabor Center, 1200 17th St
Suite 880 | Denver, CO 80202
Phone: +1 469.906.2100
info@pathlock.com